



CLASS: VII  
DATE: 21.05.24

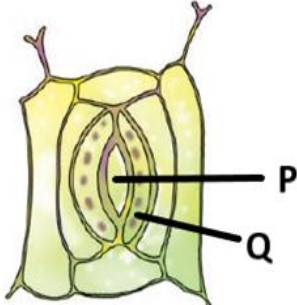
MAX MARKS: 20 Marks  
TIME: 40 MINUTES

**General Instructions:**

- This question paper consists of 10 questions.
- **Section A** consists of 6 objective-type questions carrying 1 mark each.
- **Section B** consists of one very short question carrying 2 marks, one short answer type question carrying 3 marks, and one long answer type question carrying 5 marks.
- **Section C** consists of a case-based unit of assessment of 4 marks with sub-parts

**SECTION A**

Select and write one most appropriate option out of the four options given for each of the following questions 1 to 6.

1. Which of the following is true about mushrooms? 1
- They trap insects to meet their nitrogen requirement.
  - They share their food and shelter.
  - They live on decaying organic matter.
  - They contain chlorophyll
2. Observe the diagram given below and label the marked parts P & Q 1
- P - Stomatal opening, Q - Epidermal cell
  - P - Cell membrane, Q - Guard cell
  - P - Cytoplasm, Q - Stomatal opening
  - P - Stomatal opening, Q - Guard cells
- 
3. The finger-like outgrowths in Amoeba are 1
- tentacles
  - food vacuole
  - pseudopodia
  - cilia
4. The equation given below represents photosynthesis: 1
- $$X + \text{Water} \rightarrow \text{Carbohydrate} + Y$$
- Which of the following is represented by X and Y in the given equation?
- X- carbon; Y- oxygen.
  - X- carbon dioxide; Y- oxygen.
  - X- oxygen; Y- carbon dioxide.
  - X – carbon dioxide; Y- hydrogen.

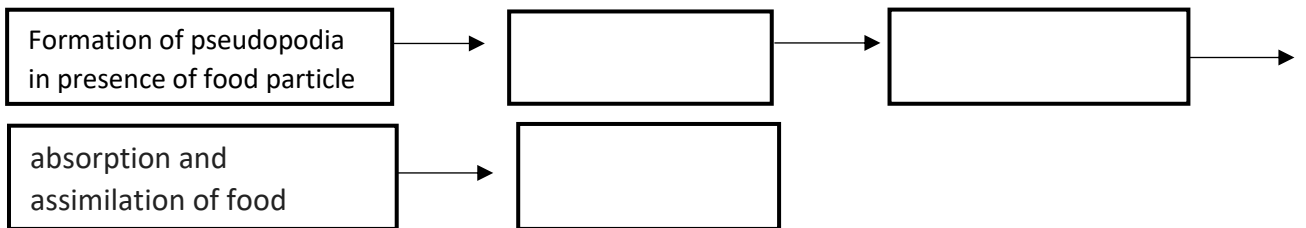
**Assertion Reason:**

5. **Assertion (A):** Green plants are called autotrophs. 1
- Reason (R):** Green plants prepare their own food.
- Both A and R are true and R is the correct explanation of A.
  - Both A and R are true but R is not the correct explanation of A.
  - A is true but R is false.
  - A is false but R is true.

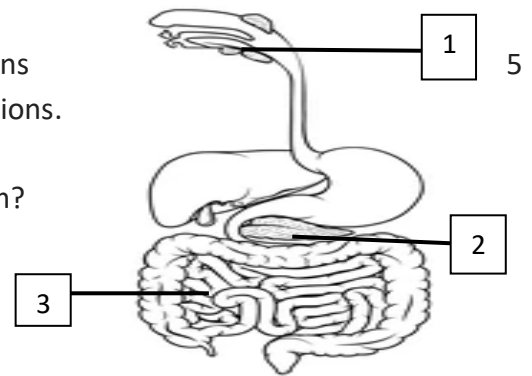
6. **Assertion (A):** The tongue is a fleshy muscular organ. 1  
**Reason (R):** It is free at the front side and can move in all direction.  
 a) Both A and R are true and R is the correct explanation of A.  
 b) Both A and R are true but R is not the correct explanation of A.  
 c) A is true but R is false.  
 d) A is false but R is true.

**SECTION B**

7. a. Pitcher plants are green in colour and can perform photosynthesis but still they feed on insects. 1  
 Give reason. 1  
 b. How do fungi and algae in lichens benefit from each other? 1
8. Complete the process of digestion in Amoeba shown in flow chart. 3



9. Observe the given diagram and answer the following questions 5  
 a) Name the glands labeled 1 and 2 and explain their functions.  
 b) Identify the organ where fat gets store temporarily.  
 c) What is the function of the labeled area 3 in the diagram?



**SECTION C**

10. Megha returned from school and found that her neighbour Rani was talking to her grandmother about her son passing watery stools frequently. Grandmother suggested Rani to give her son a solution of sugar and salt in clean water, many times a day for fast recovery. Megha was surprised. She rushed to her grandmother and asked the scientific reason for it. Her grandmother smiled and explained her the importance of this solution. 4
- a. What are the causes for the above condition of Rani's son? (Any two)  
 b. Name the term used to describe the above condition of Rani's son.  
 c. What is the name of the solution prepared with sugar and salt dissolved in water?
- or**
- c. Why is solution of sugar and salt given to a person suffering from this condition?

\*\*\*\*\*